



Placement Brochure 2022-23



BITS Pilani
Dubai Campus

BITS Pilani Legacy

Birla Institute of Technology and Science, known to many as BITS Pilani, is an all-India institute of higher education. Our flagship Campus in Pilani, Rajasthan received the deemed university status in the year 1964 under Section 3 of the UGC Act. During the early years of its inception, the Institute with the help of a Ford Foundation grant had a collaboration with MIT (USA) and adopted the Institute's best practices. Over time, BITS embarked on an expansion plan and spread across the nation and abroad, with the opening of campuses in Dubai, Goa and Hyderabad. The Institute is consistently ranked as the No.1 private university in several media rankings. It has been accredited with the grade "A" by NAAC and is granted the status of "Institute of Eminence" by MOE, Government of India. BITS Pilani has around 50000 students enrolled across all its campuses and offers degrees at all levels in Engineering, Sciences, Management and Pharmacy.

Since inception, BITS has strived to stand apart and create professionals who excel on every parameter. Today, the Alumni body is a vast and thriving community of technocrats, successful entrepreneurs, renowned scientists, heads of organizations and leaders of society. It is the legacy of excellence that continually inspires all the students. And under the leadership of the dynamic Chancellor Dr. Kumar Mangalam Birla, BITS Pilani is scaling greater heights.



Ranked Globally
among the
TOP 200
by QS Asia
University Rankings
2022

Ranked Globally
among the
TOP 300
by QS Graduate
Employability
Rankings 2022



Ranked Globally
among the **TOP 300**
in Asia University
Rankings 2022

The Dubai Campus

Established in 2000, the Dubai campus carries forward the dedication of BITS Pilani to providing its students with world-class education that combines academic rigour, intellectual stimulation, state-of-the-art technology and facilities and an all-round personality development to deliver values, capabilities and skills for a global and knowledge-based economy.

The vibrant campus offers an excellent academic infrastructure catered with a well experienced and dedicated faculty committed to shaping future leaders. At BITS Dubai, students acquire learning skills, creativity, teamwork and leadership qualities that aid their growth in the professional world.

The professional activities at the campus have no parallel and is among the very few institutions in the middle east to have recognised student chapters of professional societies such as IEEE, ASHRAE, SAE, ACM, SWE, ASME to name a few. The institute has made great progress in the last 2 decades and is committed to the highest standards of academic excellence with continuous innovation in curriculum and pedagogy, Pervasive industry engagement and enriched campus life.



Director's Message

In an everchanging world, we need to constantly reinvent ourselves, develop our fullest potential, connect with key stakeholders and strive to collaborate and innovate.

As a premier tertiary educational institution, we seek to incubate and groom future global leaders in their chosen career, profession and community grounded in functional, emotional and situational skills and who embrace a global, digital and learning mindset.

BITS Pilani, Dubai Campus is committed to providing its graduating students the best career opportunities through the Campus Placement Programme (CPP). Students are provided with personalised career counselling that empowers them to make informed decisions for their future. Regular training programmes for soft skills, technical skills and expert talks are organized to make our students ready for the corporate workplace. We host numerous placement drives including Career Fairs on-campus and off-campus with many local and International companies. We provide all facilities for companies to conduct their pre-placement presentations, interviews and screening tests on campus.

During their four-year journey, students participate in unique learning opportunities and experiences that broaden and deepen their ability to be highly effective engineers. The development of self-knowledge early in the students' university career is a key focus

since it is the foundation for highly effective and successful leadership. From the freshman through senior year, students engage with professors and business professionals, who serve as their mentors and coaches, to learn from their rich and varied technical and leadership experiences and challenges.

Throughout their university career, the various engineering programmes provide opportunities for students to assume high-visibility leadership roles that allow them to test, hone and demonstrate their leadership skills in a real-world environment. At the end of their four-year journey these highly motivated students have a track record of academic excellence and successes, highly developed and tested skills required by the industry and a deep understanding of and commitment to the people. They have a high degree of self-confidence, a strong sense of their life's purpose and a passion to succeed in all that they do.

BITS Pilani alumni are spread globally and have distinguished themselves in their chosen careers. They have been recruited by prestigious companies around the world. They serve as our valuable ambassadors and attest to our commitment to nurture individuals and groom talent in pursuit of excellence.

We welcome you to explore the best talents from BITS Dubai Campus.



BITS Pilani Academic Life

YEAR 01

Foundation Courses

Semester 01

Semester 02

Students are introduced to a wide range of common courses that set the foundation for more branch-intensive courses to come. The end of the year sees students depart on a summer break of two and a half months where they utilize their time working with NGOs or taking up independent internships.

Summer Break

YEAR 03

Discipline Core Courses & Electives

Semester 01

Semester 02

The third year is academically the most concentrated and rigorous. Students are taught their Disciplinary Courses which go in depth and explore the finer points of the branch of choice. Laboratory courses are more intensive with numerous evaluative components to complement lecture classes. Projects and design assignments test the application skills of each student.

Summer Break

Students usually work as interns in areas of their interests

YEAR 02

Discipline Core Courses & Electives

Semester 01

Semester 02

This year brings with it, diversification in terms of courses. Students are exposed to extensive courses in their branch of study. Laboratory courses are introduced to ensure that students can find a practical link between what is taught and its real-world application. The students are also offered elective courses in Management & other areas. At the end of the year students have the option of joining the 2 months Practice School Programme which provides them real-life exposure into the corporate or industrial world.

Practice School 1

Students engage in a 2-month industry internship organized by the institute.

YEAR 04

Electives & Practice School (PS) II

Semester 01

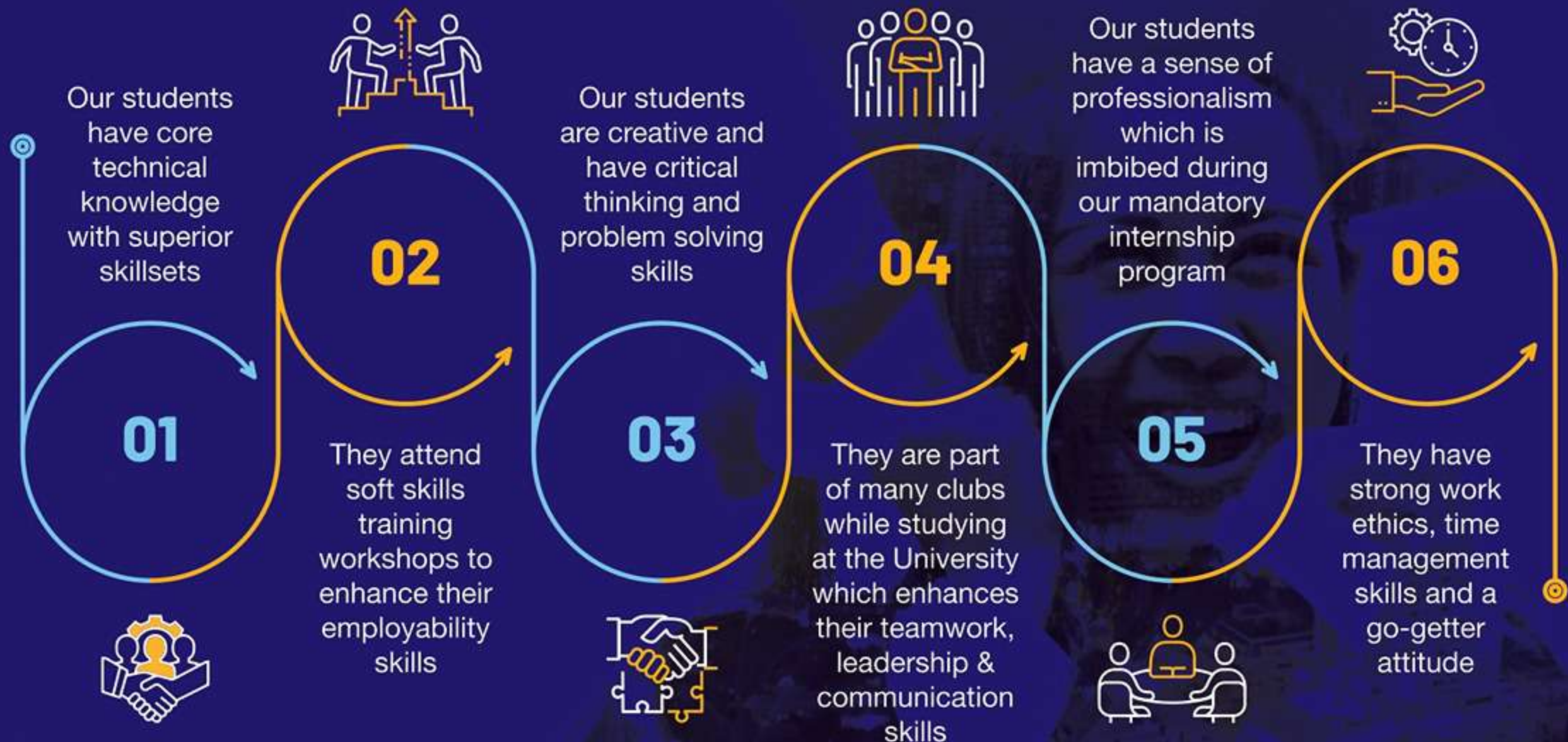
Practice School 02

Practice School 02

Semester 02

The first semester of the final year sees half the students working off campus for the second phase of Practice School, while the other half of the students remain on campus and take a number of elective courses. These courses allow students to explore their interests. During the second semester, the roles reverse and the Practice School students explore their electives while the remaining go out to complete their PS2.

Why Recruit from the BITS Pilani, Dubai Campus?



How does BITS meet the needs of the new global workforce?

We focus on solving the huge skill gap in the transition from colleges to the workplace and between the careers. There is a 7½ months graduate internship program included within the curriculum which gives students the much needed exposure to real life situations faced by the industry.

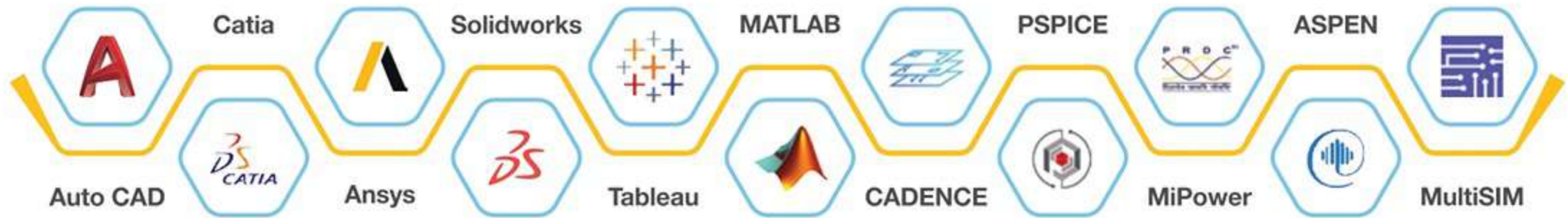
We create an ecosystem that enables students to learn in-demand skills from industry experts and unlock job opportunities based on learning journey. The students develop the following proficiencies that are crucial in the workplace:



Technical Skillsets



Proficiency in industry standard softwares



Essential Soft skills



Class of 2023

A Snapshot

Students available for placement in AY 2023 - **300**

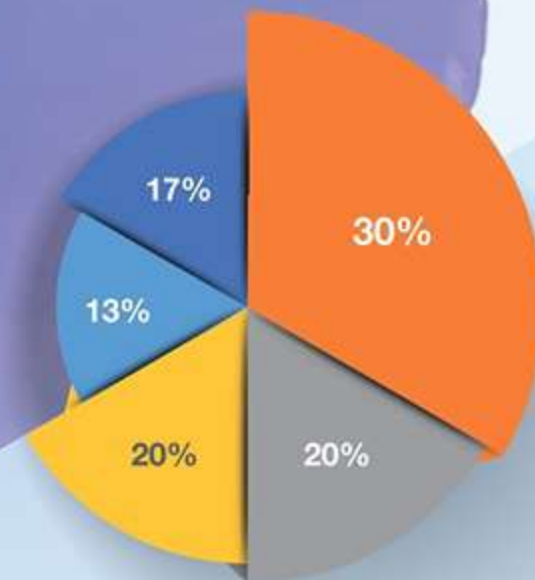
- Bachelor of Engineering (B.E.) - **254**
- Master of Engineering (M.E.) / M.B.A. - **46**

Male - **203** Female - **97**



Distribution of B.E. Students available for placements across various disciplines

- Computer Science
- Biotechnology
- Electronics and Communication (ECE)
- Chemical
- Civil
- Electrical And Electronics (EEE)
- Mechanical



Distribution of M.E. / M.B.A. students available for placements

- M.E. Design Engineering
- M.E. Microelectronics
- M.E. Software Systems
- MBA
- M.E. Electrical with specialization in power electronics and drives

Collaboration with over 300 Companies for Internships/Placements

and more...

Placement Calendar 2023

Jan - Feb:

Commencement of graduate hiring and invitation to companies for the year 2023

Feb - Oct:

On campus recruitment by companies

May:

Annual Career Fair

July onwards:

Graduates available for joining the full-time positions offered by the companies

Sep - Dec

Invitation to companies to participate in the Practice School (internship) program of 5.5 months.

Company Testimonials



We have a strong relationship with BITS Pilani and have always seen that their students are trained to be corporate-ready. The students are highly professional in their conduct and bring in different perspectives with their fresh thinking, zeal and zest. Historically, we have been hiring GETs and Interns who have proven to be great assets to our organization

*Shraddha Surendra
HR Business partner,
Dabur International*



Our experience with BITS Pilani has been very rewarding and satisfying as an organization, we see the quality of talent to be sustainable and strategic investment to us

*Rainier Tayao
HR Director,
Schindler Group*



When it comes to recruitment, we always look for excellence. That is why we partnered with BITS Pilani, Dubai as their students are professional, full of hunger and have all the drive that we look for in new recruits

*Jide Ore
Director, Talent Acquisition,
Emerson*



We are happy about the quality of students and the interest of students studying here when it comes to engineering, our last year hire was also from BITS Pilani for the future talent program and we look forward to coming to BITS for recruitment year after year.

*Supriya Ajay
Learning & Future Talent Program Manager,
Tetra Pack*



Birla Institute of Technology & Science, Pilani
Dubai Campus

**Want to strengthen your workforce with the best engineering talent?
Please contact us for further information:**

Amsal Muneeb

Sr. Executive - Placement Division

Mob: +971 56 6001267 • Tel. : +971 4 2753733

Fax: +971 4 4200844

Email: amsal@bitspilanidubai.ae

Rouble Dhawan

Sr. Executive - Placement Division

Mob: +971 56 1953537 • Tel. : +971 4 2753732

Fax: +971 4 4200844

Email: rouble@bitspilanidubai.ae

Dubai International Academic City, P. O. Box 345055, Dubai, UAE

Tel: +971 4 2753700 / 2753711 • E: placement@dubai.bits-pilani.ac.in www.bits-pilani.ac.in/dubai

Follow us on:

[bitsdubai](#) [BITSPilaniDubai](#) [BITSPilaniDubai](#) [Bitspilanidubai](#)