



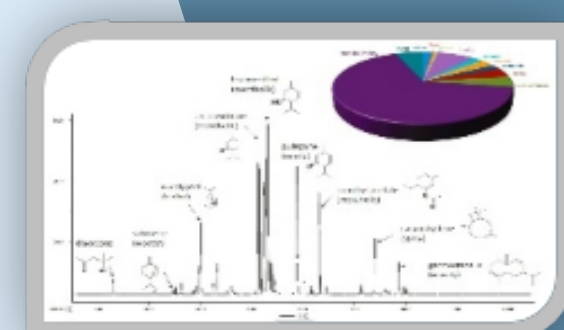
**BITS Pilani**  
Pilani Campus



# Three-Day Workshop on GC-MS based Metabolite Analysis (March 18-20, 2026)

*Organized by:*

Central Instrumentation Facility, BITS Pilani, Pilani Campus



## About the program

The proposed workshop aims to provide researchers with a comprehensive understanding of GC-MS (Gas Chromatography-Mass Spectrometry) technology and its application in metabolomics, a powerful analytical technique for studying chemical processes involving metabolites. The purpose is to combine conceptual foundations with hands-on training in sample preparation, derivatization strategies, method development, and data interpretation. The training will cover two primary analysis strategies: untargeted metabolites and targeted metabolites, aligned with the program's objectives. Through this program, participants will gain practical skills and analytical confidence to design, execute, and critically analyze GC-MS-based metabolomics studies in their own research. Over three days, attendees will gain in-depth knowledge of the Followings:

- Fundamentals of Gas Chromatography-Mass Spectrometry
- Details on instrument hardware
- Various GC-MS analysis modes
- Basics of GC-MS solutions software
- Sample preparation or extraction of metabolites
- Sample specific column selection
- Method development for metabolites analysis
- Data acquisition
- Data interpretation using the NIST library

Participants will also have the opportunity to engage with experts in the field. The workshop aims to equip researchers, students, and professionals with the necessary skills to enhance their research capabilities and contribute to advancements in metabolomics. Details of the program can be accessed at: <https://www.bits-pilani.ac.in/event/a-three-day-workshop-on-gc-ms-based-metabolite-analysis/#>

## About CIF, BITS Pilani

The Central Instrumentation Facility (CIF) houses multiple high-end analytical instruments to facilitate research and teaching. The facility is mainly used for research and training purposes. The facility has two components: Sophisticated Instrument Facility (SIF) and Central Analytical Laboratory (CAL), which houses high-end instruments used for research purposes in the field of Science and Engineering. The SIF provides services to both internal and external users on a payment basis. Services are booked online by both internal and external users. The details of instruments housed under SIF can be accessed at: <https://www.bits-pilani.ac.in/pilani/central-instrumentation-facility/>

### Resource Persons:

Mr. Jagdeep Singh  
Senior Technical Officer, Metabolomics Facility  
National Institute of Plant Genome Research  
New Delhi

Mr. Satyendra Singh  
Assistant Manager, Application  
Shimadzu Analytical (India) Pvt Ltd

Mr. Hemant Kumar Sahoo  
Dy. Regional Manager, Technical & Services  
Shimadzu Analytical (India) Pvt Ltd

Mr. Sandip Ruidas  
Technical Assistant, CIF, BITS Pilani

Mr. Suman Kumar  
Technical Assistant, CIF, BITS Pilani

### Organizing committee:

**Convener:**  
Prof. Prabhat N. Jha  
Faculty-in-Charge, CIF BITS Pilani, Pilani Campus  
& Professor, Dept. of Biological Sciences

**Co-convener:**  
Prof. Atish T Paul  
Co-coordinator, SIF, CIF BITS Pilani

### Registration:

*Only a limited number of seats are available. Registration will be closed after the available number is reached.*

**Last date of registration: 10th March, 2026**

**Registration link:**  
<https://forms.gle/cjM3j2L7smKQXS1t9>

**Accommodation:** For accommodation inside campus, please click:  
<https://forms.gle/2u3BY2g6kMq7X5pr8>

### Contact Us:

cifservices@pilani.bits-pilani.ac.in  
Contact no: 01596255577/5587

innovate

achieve

lead