

PASSPORT



GLOBAL SUMMER PROGRAMME 2018

GLOBAL SUMMER PROGRAMME 2018 – 4TH EDITION



Asia is a dynamic region that is home to culturally diverse societies at varying stages of transformation. As a leading economy with a thriving entrepreneurship and innovation scene, Asia offers myriad learning opportunities for all.

Join the SMU Global Summer Programme to immerse yourself in Asia and its many possibilities.



- ✓ Gain new insights and perspectives on trends and developments in Asia from leading SMU faculty
- ✓ Engage Asian industry leaders through dialogue and networking sessions
- ✓ Learn from and get to know students representing more than 30 nationalities
- ✓ Experience culturally rich and diverse Singapore – a global gateway to Asia

**KNOW, EXPERIENCE
AND CONNECT WITH ASIA**



COURSE INFORMATION



36

contact hours
per course

3

lessons per week held
in interactive
seminar-style classes

12

courses on Asia to
choose from

- Asian Family Businesses
- Asia Pacific Business
- Capital Markets in China
- Economics of Ageing in Asia
- Global Mega Trends: Opportunities and Challenges in Asia
- Innovations for Asia's Smart Cities
- Managing Customer Relations with Analytics: Asian Insights
- People/Places/Practices: The Changing Art World in Asia
- Religions in Asia
- Smart Healthcare in Asia
- Social Innovation and Entrepreneurship in Asia
- The Law and Information Technology in Asia

INFORMATION FOR APPLICANTS

ENTRY REQUIREMENTS

We welcome university students from around the world who have:

- ✓ completed a year of undergraduate studies
 - ✓ a cumulative grade point average of 3.0 out of 4.0, or equivalent
-

LANGUAGE PREREQUISITES

Students for whom English is not their first language or who are from non-English-medium institutions should fulfil one of the following requirements:

- ✓ IELTS score of 6.5
- ✓ TOEFL score of 550 points (paper-based),
79 points (internet-based),
213 points (computer-based)
- ✓ Any other English Language qualifications as determined by SMU



FEES

Tuition	SGD 3,000 (excluding 7% tax) for one course
	SGD 5,000 (excluding 7% tax) for two courses
Miscellaneous	SGD 218 (covers insurance, IT and matriculation)

Fees exclude accommodation (approximately SGD 800 for four weeks). An advance payment of SGD 1,000 for non-SMU students is required upon accepting our offer (via email) of placement. Payment is to be made via credit card (Mastercard and Visa) or PayPal.

APPLY FOR GSP 2018 NOW
www.smu.edu.sg/SummerProgramme

** Students are advised to check with their home university on transfer of course credits before applying.*

THE SMU GSP EXPERIENCE



"SMU broadened my view of the world, challenged me intellectually and socially, and gave me more confidence for the future."

Denis Doroshenko, ESCP Europe, GSP 2016

"A great experience filled with fun activities as well as Wine & Cheese talks with managing directors (from Julius Baer and Red Bull amongst others)!"

Claire Hardy, University of Sussex, GSP 2016



"...the necessary catalyst to start my journey on exploring opportunities in Asia..."

Kelly Hong, University of California, Berkeley, GSP 2017

"Opportunities to visit businesses in Singapore (such as Shell, Microsoft and Singapore Airlines) have had a profound impact on me."

Mark Jeyaraj, The University of Sydney, GSP 2016



"The courses were unique and relevant, the facilities state-of-the-art, and the professors were outstanding! There's so much to learn from them and from my fellow students from all over the world!"

Justine Tamano, University of the Philippines Diliman, GSP 2015, and current Master's Student at SMU

"The diversity contributed to many lively classroom discussions and I've learned much from the exchanges between the students, professors and industry leaders."

Lim Yong Chuan, SMU, GSP 2017



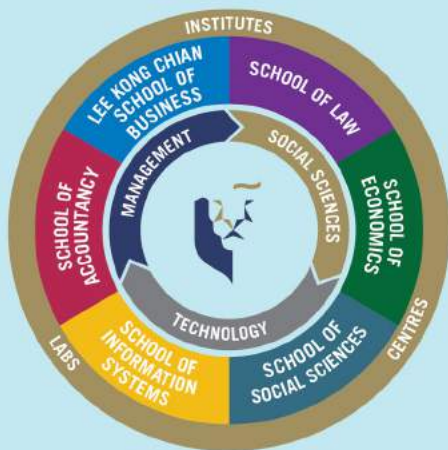
Singapore Management University | International Office

✉ smusummer@smu.edu.sg

f www.facebook.com/SMUGlobalSummerProgramme

🌐 www.smu.edu.sg/SummerProgramme

SINGAPORE MANAGEMENT UNIVERSITY



SMU is a global university in Asia that is focused on Management, Social Sciences and Technology, and their intersections. We seek to positively impact and contribute to business, government and society in Asia and beyond.

Through transformative education, translational research and cross-cultural exposure, we nurture future-ready and socially-conscious global citizens.

SMU offers a wide range of Bachelor's, Master's and Doctorate degree programmes across six schools.

SINGAPORE, ASIA'S *DIVERSECITY* OF PEOPLE, PLACES AND EXPERIENCES

- ✓ A multicultural and cosmopolitan society
- ✓ A city in a garden
- ✓ A blend of the traditional and modern

